



Wixams News

Neighbourhood
Watch

November 2017

Published by Wixams Neighbourhood Watch, part of Bedford & District NW Association
Wixams NW National Award for Community Cohesion
London June 2014

Caring for the community - Without Prejudice

TAXIS, PRIVATE HIRE VEHICLES AND YOUR SAFETY
#KnowYourRides

TAXIS

- Must be clearly marked as a taxi
- Can be flagged down in the street or at a taxi rank or pre-booked
- Must display a taxi licence on the vehicle

PRIVATE HIRE VEHICLES (MINICABS)

- Must be pre-booked
- Cannot be flagged down in the street or approach you for hire
- Must display a private hire vehicle licence on the vehicle

KNOW YOUR RIDES
NATIONAL PERSONAL SAFETY DAY 5 OCT 2017

SHARE INFORMATION ABOUT YOUR JOURNEY and the vehicle you're using with someone you trust

ASK THE DRIVER TO SHOW YOU THEIR BADGE before you start your journey

FIND OUT WHICH LICENSED TAXIS AND PRIVATE HIRE VEHICLES OPERATE IN YOUR AREA and plan your journey in advance

EXAMINE THE TAXI OR MINICAB before you get inside a licence displayed on the vehicle? Does the vehicle look roadworthy?

TRUST YOUR INSTINCTS - If you feel worried or threatened, ask the driver to stop in a busy area so you can get out

YOU CAN REPORT ANY CONCERNS about taxis or private hire vehicles to the police and your local licensing authority

Wixams Events Team presents
Wixams Winter Wonderland
Free Entry
Saturday 2nd December 2pm-6pm
Lakeview Village Hall, Wixams (MK42 6AB)

Santa Claus is coming to Wixams!!!
Fun Fair Rides, Fire Eater, Circus Juggler, Bar for the adults, Face Painters, Mince pies & Mulled Wine, German Sausages, Food & Drink, Christmas gifts, Arts and Crafts and much more.
Christmas tree decorated by the Children of Wixams.
Christmas light switch on at 5pm with carols around the tree

Email wixamstickets@gmail.com to book your Santa Tickets
(£2.50 per child including gift) tickets must be booked by 18th November

In association with
James Kendall Estate Agents



The full report on how to deter burglars and thieves is at:
hub.co-opinsurance.co.uk/securitytips

Cat on roof in Waterside Way.
See below!

Burglars tell all

Ex-convicts offer top tips.

How to deter burglars:

1. CCTV camera
2. Sound of a barking dog
3. Strong heavy doors
4. TV which is turned on
5. Locked Upvc windows
6. Cars parked on driveway
7. Overlooked property
8. Surrounding fences
9. Gates outside property
10. Motion activated security lights

How to deter car thieves:

1. CCTV street camera
2. Car alarm
3. Street lighting
4. Car parked on a driveway
5. Newer car
6. Steering lock device
7. Older car
8. Neighbourhood Watch
9. Car parked on a dark alleyway
10. Immobiliser

Wixams Parish Council

Parish Plan

Jemma McLean from BRCC reported on findings from the Parish Plan Questionnaire and advised that the next step would be to draft a community plan and consult on how to address some of the issues that were raised in the questionnaire perhaps by having a 'drop-in' session to capture suggestions, solutions and further comments. Jemma will liaise with the Business Plan Group to outline priorities regarding the initial issues raised and to consider possible solutions.

The Business Plan Group will be publishing the results of the questionnaire soon – there were over 100 responses received so thank you to everyone who took the time to undertake the survey.

Parking

In response to a resident's request for restricted parking at Brooklands Avenue, Borough Councillor Coombes agreed to contact Johnathan Sahota at BBC Highways and report back on possible solutions. In the meantime, please do park responsibly without blocking access to properties or restricting pathways that are meant for pedestrians and not vehicles.

Village 2, Wixams

Phil Etherton and Lisa Clements of Barratt Homes attended to discuss their proposed marketing suite as well as to answer questions on the proposed development in Village 2.

They anticipate building to commence by Easter 2018. Their application for a marketing suite will go to Planning Committee because of WPC's objections and WPC requested that Barratt Homes consider 'softening' the appearance of the suite in order to blend in with the surroundings as it was felt that the proposed building would not blend in with surrounding buildings.

It was resolved that WPC invite Phil and Lisa back for the January or February PC meeting to discuss progress with the development.

Facebook

The Chairman reported that there were sometimes queries relating to Parish Council business on the Spotted Wixams Facebook page many of which could be resolved quickly by the Clerk. It was resolved that the Clerk create a WPC Facebook Account in order to respond, on behalf of WPC, to queries relating to Parish Council business and to increase the profile of the Parish Council.

Cat-astrophe Averted!



Wixams Parish Council would like to send out a big thank you to the RSPCA and Bedfordshire Fire &

Rescue Service who rescued a stranded moggy from the roof of a townhouse in Waterside Way.

The RSPCA, having been alerted to the cat's plight by its owner, the Parish Clerk and several concerned residents, attended Waterside Way to assess the situation. They then called on Bedfordshire Fire & Rescue Service who soon arrived and quickly started their rescue mission.

However, it nearly all ended in disaster – whilst the moving platform was making its way across the roof, an attempt was made to catch him in a net prompting the frightened cat to leap offstraight into the arms of an alert fireman standing below!

Next Parish Council Meeting

Our next meeting will be on **Tuesday, 21st November 2017** from 7:30pm at Lakeview Village Hall in the Munson room – members of the public are very welcome – we even provide refreshments! See www.wixamsparishcouncil.bedsparishes.gov.uk (or just Google 'Wixams Parish Council')

Cont.

Reported crime

Crimes reported in Wixams

October 2017

13/10/2017 18:00-18:04 Brooklands Avenue, Theft from shops and stalls

17/10/2017 20:25 Brooklands Avenue, Theft from shops and stalls

19/10/2017 05:26 Brooklands Avenue, Assault occasioning actual bodily harm

20/10/2017 22:50-23:10 Bluebird Gardens, Criminal damage - to vehicles

24/10/2017 23:00-23:42 Goldfinch Gardens, Criminal damage - other property (not buildings)

29/10/2017 16:45-17:15, Sexual

The crime report is provided by Bedfordshire Police with volunteer help from Bedford & District Neighbourhood Watch.



CCTV is in operation in the Wixams. Bedfordshire Police, in collaboration with Wixams Parish Council, are able to view footage if crimes have been committed. Note: the Police need a location and a time.

999 - Emergency

where there is a risk of:

- personal injury
- loss of life
- crime in action

101 - Non emergency

- Reporting a crime that is no longer in progress
- Giving information about a crime
- Reporting theft of property
- Contacting local police officer
- Getting update reported crime
- Suspicious incidents

For further information on **Wixams Neighbourhood Watch** see www.wixams.org.uk/wnw, facebook, or email Alan at wnw@wixams.org.uk

Bedford & District Neighbourhood Watch - bedfordnhw.ourwatch.org.uk

All non-emergency calls to **Bedfordshire Police** should be done via **101**, whether reporting an incident or trying to contact anyone within a local policing team. Additional contact methods can be found at www.bedfordshire.police.uk/contact.aspx See also www.police.uk

Crimestoppers - 0800 555 111
crimestoppers-uk.org

The aim of Wixams Neighbourhood Watch (WNW) is to help develop safer local communities and improve the quality of life. Members of WNW deliver the Wixams News in Wixams.

Wixams Book Club

Do you enjoy reading? Would you like to make some new friends? Would you like to join our fledgling book club, meeting once a month to discuss a pre-selected book over a glass of wine? If you would like to join us for the next meeting on Wednesday 6 December 2017 at 8.00pm, please contact Caroline on carolinejohnson710@gmail.com.

Wixams News



'Shoplifting' - theft from shops

London's Metropolitan Police Force has said it will give up on investigating many instances of "low-level" crime such as shoplifting and vandalism, saying it is "not practical" to fight them in a time of cutbacks.

Of course, this is what happens when you keep cutting the funding to the police. If you don't have the money and the police officers then you don't have a choice, you can't investigate the crime. We have the same funding problem in Bedfordshire.

Any parent or teacher knows its plain daft to ignore "low-level" crime. Learning ethical behaviour, responsibility, and discipline starts with dealing with the small issues. I am sure the police realise this. It's the people who control the funding that don't. Does the public care? Of course they do! Let's hope for more responsibility at the top.

Alan



Wixams News deadline - Thursday

30th November for any copy, news adverts or changes to existing adverts.

Contact wnw@wixams.org.uk
47 Green Lane, Wixams, Bedford,
MK42 6DA www.wixams.org.uk/wnw
The next Wixams News will be published early December.



£630 was raised

at the Wixams Macmillan Coffee Morning in Lakeview Village Hall on 29th September.

Thank you to everyone who came and donated, and especially to everyone who helped with the running of the coffee morning, Little Stars, Lakeview Village Hall staff and those who provided cakes.

Clare Casey and Steph Little

Wixams Parish Council cont.

Planning Decisions

The following decisions on planning applications were made at our October Planning Meeting:

1. 17/02241/MAR Reserved matters application pursuant to outline consent 11/01380/M73 for strategic infrastructure works associated with Village 2 of the Wixams settlement. Joint application with Central Bedfordshire Council (CB/17/04247/RM) at Village 2, Bedford Road, Wixams – it was resolved that the Committee had no objection to the application.

2. 17/02486/MAR All reserved matters for the erection of 240 dwellings with roads, landscaping, parking and associated infrastructure pursuant to outline planning permission 11/01380/M73 and approval of conditions 6, 7, 8, 15, 16, 23, 27, 39, 40,

42 and 43 of that permission at Village 2, Bedford Road, Wixams – it was resolved that the Committee had no objection to the application.

3. 17/02582/FUL Erection of front porch and first floor side extension over existing garage at 17 Southern Cross, Wixams: amended proposal – it was resolved that the Committee had no further comment to make about the amended proposal.

4. 17/02657/MAR All reserved matters for the construction of a Regional Distribution Centre (Use Class B8) with ancillary office accommodation (Use Class B1(a)) and associated gatehouse and access arrangements, vehicle maintenance unit, refuse and recycling area, car parking and landscaping on land within the western part of the Wixams Northern Expansion Area, pursuant to outline permission 15/00466/EIA at land off Hardwick Hill, Elstow – it was

resolved to submit the following comment: "Although Wixams Parish Council has no objection to the proposed distribution centre, we have concerns regarding the increased traffic that will be generated both during and after construction. BBC Planning Department had previously confirmed that they would consider opening up the busway to enable alternative access to the site via the Old Bedford Road without using The Causeway and we would like assurances that this will happen."

Wixams Parish Councillors

Anthony Pedder (Chair),
Peter Webb (Vice Chair), Saqhib Ali,
Graeme Coombes, Charlotte Day,
Laetitia Gamble, Caroline Johnson,
Chris Martin, Paul Stevens.
Diane Robins Clerk to Wixams Parish Council, wixamspc@gmail.com
Phone number 07563 108 666

Cars

With the nights drawing in and winter on its way it is time to consider your mode of transports comforts, so you don't end up on the hard shoulder. Basic checks need to be made.

Ensure your **antifreeze**, **engine oil** and **windscreen washer**

additive (to help prevent it freezing) are topped up regularly to keep you on the road.

Tyres are paramount when the weather takes a turn for the worse. Check your **tyre treads** regularly and if unsure get a professional to check. The pressure also needs to be considered; checking with a gauge instead of your foot is preferable. The **correct pressure** should be inside your fuel filler cap or user manual and a few minutes at your local garage could save you hours waiting for roadside recovery.

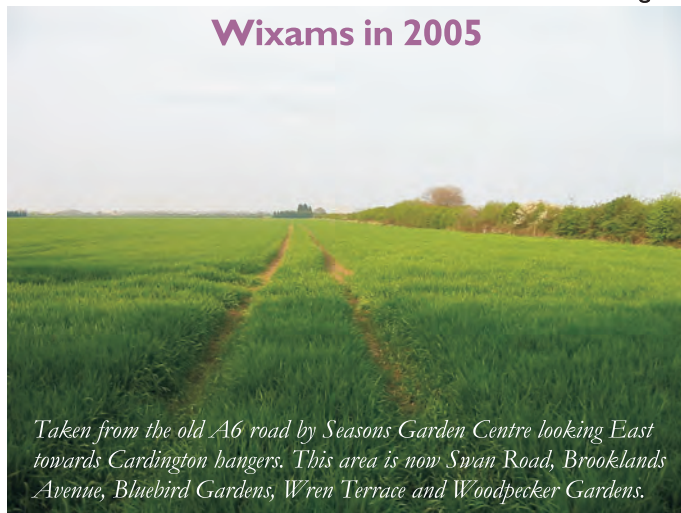
Last but not least always drive to the road conditions and your **visibility** and don't set off before your windows are fully defrosted; even if you are late!

A good investment is a windscreen **frost protector** and a decent **scraper** – they will save you valuable minutes freezing in the morning!

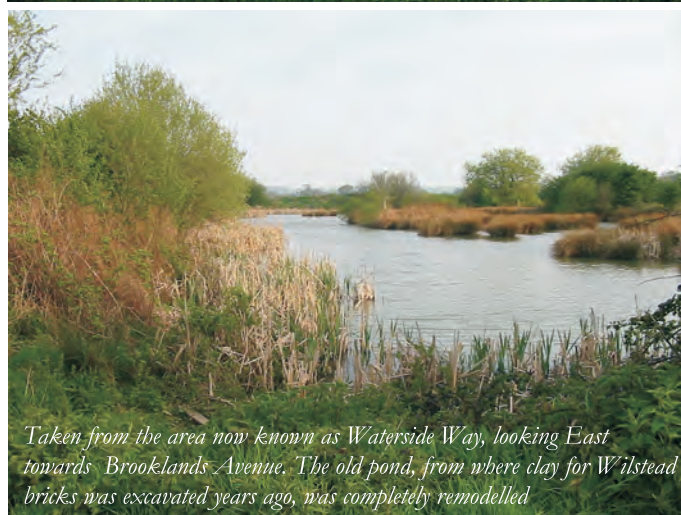
Contributed by Bob Burr of Burr's Garage Ltd. Ivy Lane, Wiltstead - 01234 741167 / 07777 656767



Wixams in 2005



Taken from the old A6 road by Seasons Garden Centre looking East towards Cardington hangers. This area is now Swan Road, Brooklands Avenue, Bluebird Gardens, Wren Terrace and Woodpecker Gardens.



Taken from the area now known as Waterside Way, looking East towards Brooklands Avenue. The old pond, from where clay for Wiltstead bricks was excavated years ago, was completely remodelled

"Watch for the new thing I am going to do.
It is happening already—you can see it now!
I will make a road through the wilderness
and give you streams of water there."
Isaiah 43:19

Events Diary:

Sunday 5th Nov & 10th Dec, 10 am - 12 pm:
Messy Café at Wixams Church meet for breakfast and an all-age exploration of what it means to be a disciple

Fridays, 10:30 am - 12 pm: Little Stars
a playgroup for babies & preschoolers
with parents & carers (term time only)



Thursday 19th Oct & 16th Nov
3:30 - 5:30 pm: Messy Church
a way of being Church for families,
involving fun, Bible Stories & a family meal together

For more info...

www: wixamschurch.org.uk

e-mail: hello@wixamschurch.org.uk

f: facebook.com/WixamsChurch

t: @WixamsChurch

For God so loved the world that He gave His only Son so that everyone who believes in Him may not die but have eternal life.

Family that He gave His only Son so that everyone who believes in Him may not die but have eternal life.

Love For God so loved the world that He gave His only Son so that everyone who believes in Him may not die but have eternal life.

Hope His only Son so that everyone who believes in Him may not die but have eternal life.

Life may not die but have eternal life.

Wixams Church.

Prayer believes in Him may not die but have eternal life.

Worship may not die but have eternal life.

Community may not die but have eternal life.

Life may not die but have eternal life.

Trinity may not die but have eternal life.

Mission may not die but have eternal life.

Serve may not die but have eternal life.

John 3:16



Councillor GRAEME COOMBES

Reporting to Wixams - November 2017

(Points from Graeme's Parish Council Report)

I

Healthcare/GP provision – Wixams and Wiltstead

The Borough is currently in discussion with the BCCG and Gallagher re a dedicated healthcare facility in Wixams town centre. We don't yet have a date for Wixams town centre construction, but the fact that there are discussions taking place with a location in mind, is possibly the most positive sign we have had from a saga that has gone on for far too long.

Wixams access from B530

Both Planning Officers and Gallagher have confirmed to me in recent days that they are in discussion about creating access roads to Wixams via the B530 within the next 12 months, which should address some of the construction and school traffic issues. Whether this timetable is realistic remains to be seen, but the fact that it is being discussed is a positive.

Parking outside Lakeview School, Wixams

Despite the promise from Borough Highways of yellow lines outside Lakeview School, these were not actioned by the start of term as had been agreed. I have raised this again with highways. I still expect this to go ahead in due course.

Wixams Station

I recently had a meeting with Network rail to discuss Wixams Station. Network rail suggest that the main cost is not the actual station building, but the realignment of the double tracks to create a 4 line station and the provision of overhead electrical equipment. They remain committed to the station project, but feel that there is a lack of political leadership driving this forward.

Tel: 07815 302 318 E-mail: wilshamstead.ward@yahoo.co.uk

Facebook: Cllr. Graeme Coombes

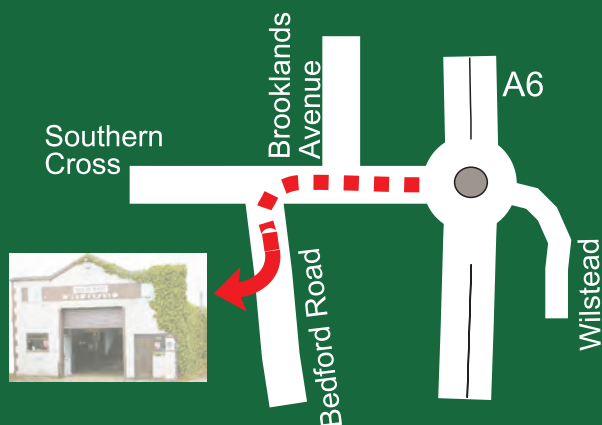
DAVIES BROS

M.O.T. Testing Centre

Cars, Motorcycles, Light Commercial
Also Diesels and Catalysts
free re-tests

Mondays - Fridays 8.30am - 5.30pm
 Saturdays 8.30am - 1pm (March-Sept)

133 Bedford Road, West Wilstead
(Wixams) Telephone: 01234 740252



Wixams Sunday Club 3 to 4pm every Sunday term time Lakeview Village Hall

Free songs, Bible stories, quizzes, prizes, competitions, learn about Jesus for children aged 4-11yrs

IGNITE Tuesdays 6.30- 7.45pm all young people in years 5,6,7,8,9 welcome wixams.org.uk/ignite

www.wixams.org.uk/sundayclub Alan & Anne Pibworth, 47 Green Lane

Shine Theatre School

Classes in Acting, Singing, Musical Theatre, Ballet and Street Dance

Lakeview Village Hall, Wixams

www.shinetheatreschool.co.uk 07749091885 info@shinetheatreschool.co.uk

Lakeside Fish & Chips

Lakeside offers a variety of fresh and homemade choices for all the family.

Fish wraps and fish tacos if you are in the mood for something different or mini meals for those who want a lighter option.

Do come in and give us a try if you haven't already.

We look forward to meeting and feeding you soon.

Mark & Helen



Opening Times
 Lunch Tues-Fri
 11am-2pm
 Dinner Mon-Fri
 4.30pm-9pm
 Open all day Saturday
 12-9pm



Tel: 01234 743 942
 www.lakesidewixams.co.uk

Wilstead Pharmacy

- Free Walk In Flu Jab Service
- Free Quit Smoking Service
- Free Sexual Health Service
- Free Prescription Collection & Delivery

Opening Times: Mon-Fri 9am-6pm
 Sat 9am-1pm

Call 01234740609 Order Your Meds Collect Or Request Delivery To Home

01234 740 609

www.wilsteadpharmacy.co.uk | wilsteadpharmacy@hotmail.co.uk
 1 Crossroads, Wilstead, Bedford MK45 3H

Wilstead Preschool CHRISTMAS Bazaar

SATURDAY
 2nd DECEMBER 12PM-3PM
 Wilstead Village Hall.

FOOD & Drinks
 Santa's Grotto
 Gift stalls
 Amazing Prize Raffle
 Fun and Games

Entry Fee Adults 50p Children Free

Wixams News delivered by 25 members of Wixams Neighbourhood Watch